

MARQ™

REZOTUBE PACK

Quickstart Guide

English

Introduction

Box Contents

(5) RezoTube Pack Tubes	Power Cable
RezoTube Control Box	Carrying Case
Fan-Mount Stand	Quickstart Guide
(5) Single-Mount Stands	Safety & Warranty Manual
(5) Extension Cables	

Important: Visit marqlighting.com to download the complete *User Guide*.

Support

For the latest information about this product (documentation, technical specifications, system requirements, compatibility information, etc.) and product registration, visit marqlighting.com.

For additional product support, visit marqlighting.com/support.

Safety Notes

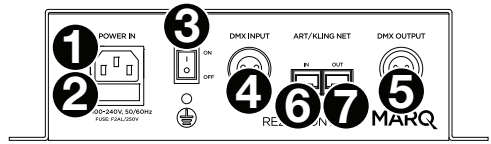
Important: In addition to the notes below, please refer to the included safety & warranty manual for additional safety information.

- Use this product **indoors only** (IP20). To prevent risk of fire or shock, do not expose this product to rain or moisture.
- Do **not** use this product for permanent installations.
- Connect this product to grounded and protected circuits only.
- Always disconnect it from its power source **before** cleaning or replacing this product's fuse. Replace the fuse with another of the same type and rating.
- Before connecting the product to a power source, make sure the power cable is not crimped or damaged.
- Make sure the power outlet's voltage is within the range stated on this product (on its housing or decal).
- **Never** connect this product to a dimmer or rheostat.
- **Never** disconnect this product from the power cable by pulling or tugging on the cable itself.
- Always make sure this product is used in a location with adequate ventilation with at least 20" (50cm) from adjacent surfaces. Make sure none of this product's ventilation slots are obstructed.
- Do not use this product at ambient temperatures higher than 104 °F / 40 °C.
- Do **not** allow flammable materials near this product during use.
- If you encounter a serious problem while using this product, stop using it **immediately**.
- Do **not** open this product's housing. It contains no user-serviceable parts and will void your warranty.

Features

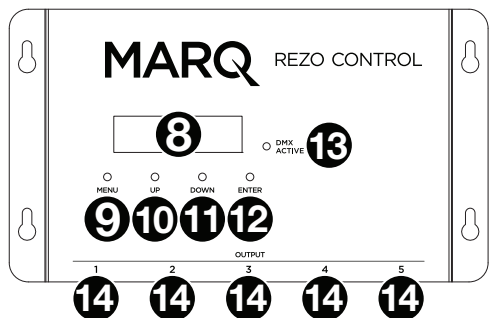
Control Box Rear Panel

- Power In:** Use a standard power cable (included) to connect this input to a power outlet.
- Fuse:** This compartment holds the fuse. **Before** cleaning or replacing the fuse, **disconnect RezoTube Pack from its power source.** Use a screwdriver or other tool to remove the compartment (do **not** pull it out by the tab only). Replace the fuse only with a new fuse with the same rating (**250 V, 2 A**).
- Power Switch:** Use this switch to power RezoTube Pack on/off.
- DMX In:** Use a standard 3-pin DMX cable to connect this input (**A**) to your DMX controller or (**B**) to another control box that will pass DMX data through it to this one. RezoTube Pack receives DMX data over this connection. Please see [Setup > Linking > DMX](#) for information about linking multiple control boxes.
- DMX Out:** Use a standard 3-pin DMX cable to connect this output to an additional control box. RezoTube Pack sends its data to an additional control box over this connection. Please see [Setup > Linking > DMX](#) for information about linking multiple control boxes.
- Art/Kling Net In:** Use a Category 6 Ethernet cable (also known as **Cat 6** or **Gigabit Ethernet**) to connect this input to (**A**) your gigabit switch or (**B**) to another control box that will pass Art Net or Kling Net data through it to this one. Please see [Setup > Linking > ArtNet™/Kling-Net™](#) for more information about linking multiple control boxes.
- Art/Kling Net Out:** Use a Category 6 Ethernet cable (also known as **Cat 6** or **Gigabit Ethernet**) to connect this input to an additional control box. RezoTube Pack sends its data to an additional control box over this connection. Please see [Setup > Linking > ArtNet™/Kling-Net™](#) for more information about linking multiple control boxes.



Control Box Top Panel

- Display:** This display shows messages and values indicating the current status of the control box.
- Menu:** Press this button to access RezoTube Pack's menu.
- Up:** Press this button to select the next-highest menu option or to increase the value by 1.
- Down:** Press this button to select the next-lowest menu option or to decrease the value by 1.
- Enter:** Press this to confirm your current selection or value.
- DMX:** This light will illuminate when RezoTube Pack is receiving DMX data properly through its **DMX In**.
- Outputs:** Connect the cable of each tube to each of these outputs. Make sure all cables are secured and placed so that no one will trip over them.



Setup

Note: Items not listed under the [Introduction > Box Contents](#) are sold separately.

Power Information

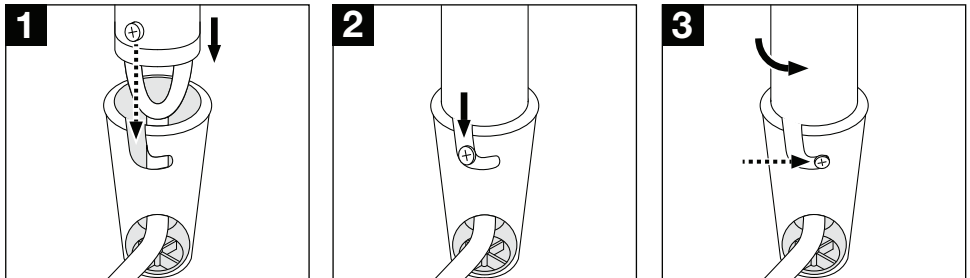
Before connecting the control box to a power outlet, make sure the power cable is not crimped or damaged. Also, make sure the power outlet's voltage is within the range stated on this product (on its housing or decal).

Before cleaning or replacing the fuse, **disconnect RezoTube Pack from its power source**. Use a screwdriver or other tool to remove the compartment (do **not** pull it out by the tab only). Replace the fuse only with a new fuse with the same rating (**250 V, 2 A**).

Mounting/Rigging

Standing

You can attach the tubes to their single mounts or to the 5-tube fan mount. To do this, align the pins at the base of the tube with the pinholes of the mount. Turn the tube a 1/4 turn to secure it in the mount.



Place the mount/mounts on a flat, stable surface. Make sure all cables are secured and placed so that no one will trip over them.

Place the control box on a flat, stable surface, or use screws to attach it to the wall using its rack ears.

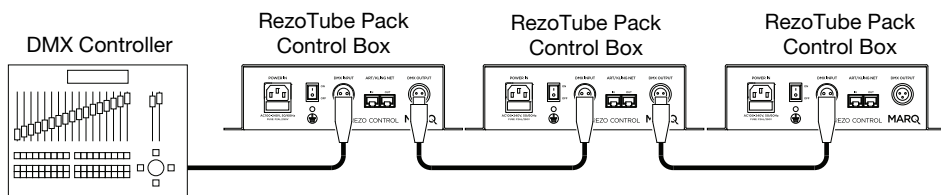
Linking

When using multiple RezoTube Pack control boxes, you can link (“daisy-chain”) them so that each control box sends **DMX data** to the next one. This helps reduce clutter in your cabling and save you setup time.

DMX

Use a standard 3-pin DMX cable to connect the **DMX Out** of one control box to the **DMX In** of another. Your connected DMX controller will send its data to the control boxes in sequence. All control boxes in this chain will receive all DMX data.

According to the DMX standard, you can link up to 32 control boxes with up to 300 feet (91 meters) between each control box, without amplification. Keep in mind the number of channels you are using as well as the starting address.



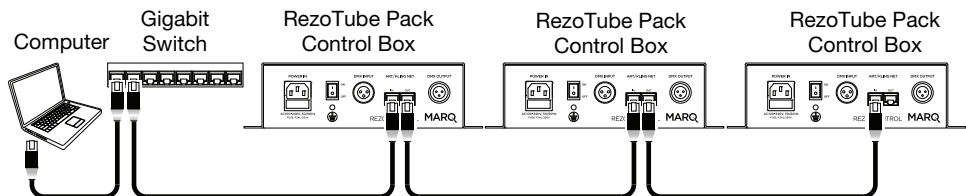
ArtNet™ / Kling-Net™

The ArtNet and Kling-Net protocols let you link several complex lighting devices together and control them with intelligent software. These protocols offer **many** more channels than typical single 512-channel DMX control, giving you more flexibility while using multiple lighting devices. Your software (such as ArKaos™ GrandVJ™, ArKaos MediaMaster™, or inoage® Madrix™) should configure all of your ArtNet/Kling-Net devices automatically and let you control them synchronously and intuitively within the same ArtNet/Kling-Net universe.

Use Category 6 Ethernet cables (also known as **Cat 6** or **Gigabit Ethernet**) to connect a gigabit switch to your computer and to the **Art/Kling Net In** of a RezoTube Pack control box. Use the same kind of cable to connect the **Art/Kling Net Out** of the first control box to the **Art/Kling Net In** of another, and so on for other RezoTube Packs or other ArtNet/Kling-Net devices.

Configure the network settings for each control box using its menu (see [Operation > Menu Options](#)). The software will send its data to the control boxes in sequence. All control boxes and ArtNet/Kling-Net devices in this chain will receive all data.

See the complete *User Guide* at marqlighting.com for more information about using ArtNet or Kling-Net to control RezoTube Pack.



Operation

Menu Options

Menu	Submenu	Settings/Values	Description
DMX Address		001–512	DMX address setting
DMX Channel Mode		480	480-channel operation
		9	9-channel operation
Auto Mode	Program	01–29, Mix	Automatic Program 01–30
	Speed	000–255	Speed of automatic program, slow (001) to fast (255) , (000) stop
Slave Mode		Yes, No	Slave Mode
Network Settings *	IP Address	###.###.###.###	000–255 (each octet)
	Net Subnet Universe	### ## #	000–255 00–15 01–16
	Subnet Mask	###.###.###.###	000–255 (each octet)
Sphere/Tube		Sphere	LED sphere setting (not for use with RezoTube Pack)
		Tube	LED tube setting
Software Version			Current software version

* For use with ArtNet or Kling-Net.

DMX Functions

You can control RezoTube Pack by linking it to a DMX controller. Please see the complete *User Guide* at marqlighting.com to learn how to do this. See below for charts of available functions.

Channel	Function	Value	Description
1	Dimmer	000–255	Dimmer, all colors, dark (000) to bright (255)
2	Red Dimmer	000–255	Red dimmer, dark (000) to bright (255)
3	Green Dimmer	000–255	Green dimmer, dark (000) to bright (255)
4	Blue Dimmer	000–255	Blue dimmer, dark (000) to bright (255)
5	Strobe	000–010	No function
		011–255	Strobe, slow (011) to fast (255)

Channel	Function	Value	Description
6	Automatic Programs 1–15 Sound-active programs: Control the sound activation microphone sensitivity via Channel 9 , low (016) to high (255) .	000–015	No function
		016–031	Program 1
		032–047	Program 2
		048–063	Program 3
		064–079	Program 4
		080–095	Program 5
		096–111	Program 6
		112–127	Program 7
		128–143	Program 8
		144–159	Program 9
		160–175	Program 10
		176–191	Program 11
		192–207	Program 12
		208–223	Program 13
		224–239	Program 14
240–255	Program 15		
7	Automatic Programs 16–30 Sound-active programs: Control the sound activation microphone sensitivity via Channel 9 , low (016) to high (255) .	000–015	No function
		016–031	Program 16
		032–047	Program 17
		048–063	Program 18
		064–079	Program 19
		080–095	Program 20
		096–111	Program 21
		112–127	Program 22
		128–143	Program 23
		144–159	Program 24
		160–175	Program 25
		176–191	Program 26
		192–207	Program 27
		208–223	Program 28
		224–239	Program 29
240–255	Program 30		
8	Speed	000–255	Speed, slow (001) to fast (255) , (000) stop
9	Sound Activation Sensitivity	000–015	No function
		016–255	Sound activation microphone sensitivity, low (016) to high (255)

Technical Specifications

Specifications are subject to change without notice.

Light	Type	5 tubes 64 RGB LEDs per tube		
	Power	15 W per tube		
	Colors	RGB (red, green, blue)		
	Strobe Rate	1.85–16.66 Hz		
DMX	Display	Monochrome backlit LCD		
	Connections	1 3-pin input for DMX 1 3-pin output for DMX		
	Channel Profiles	9, 480 (96 per tube)		
ArtNet / Kling-Net	Connections	1 LAN input 1 LAN output		
Power	Supply	Switching (internal) Automatic voltage selection		
	Connection	Standard IEC (input)		
	Consumption	150 W		
	Input Voltage	110–240 VAC, 50/60 Hz		
	Fuse	250 V, 2 A		
Physical / Mechanical	Mounting	Tubes	(5) single mounts, (1) 5-tube fan mount	
		Control Box	4 screw holes on rack ears	
	Dimensions	Tubes	39.4" (length), 1.1" (diameter) 1000 mm (length), 28 mm (diameter)	
		Control Box	9.8" x 6.2" x 2.7" 249 x 158 x 69 mm	
	Weight	Tubes	0.6 lbs. each 0.25 kg each	
		Control Box	3.5 lbs. 1.58 kg	

Trademarks and Licenses

Art-Net™ is a trade mark of Artistic Licence Holdings Ltd. GrandVJ, Kling-Net, MediaMaster, and N.V. ArKaos S.A. are trademarks of N.V. ArKaos S.A. inoage® and MADRIX® are registered trademarks of inoage GmbH. All other product names, company names, trademarks, or trade names are those of their respective owners.

marqlighting.com

Manual Version 1.1